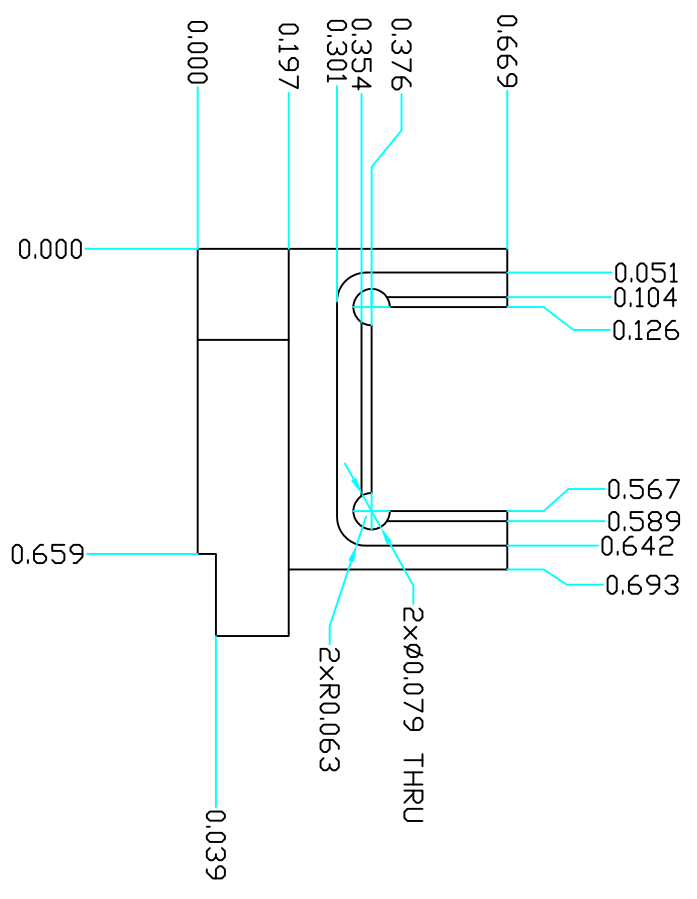
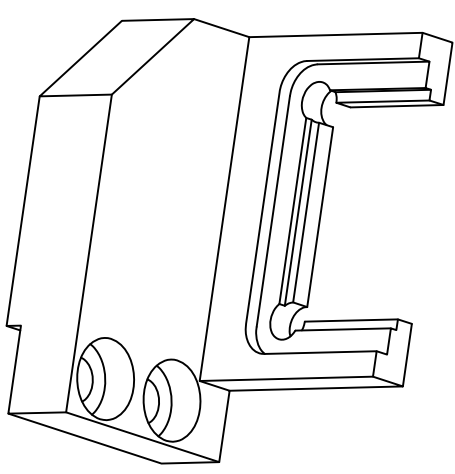
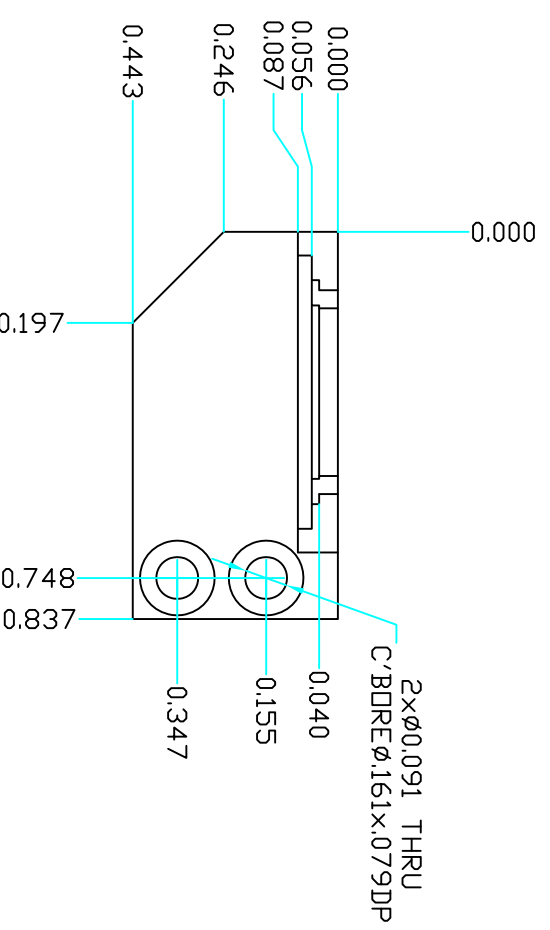


ZONE	REV	DESCRIPTION	DATE	APPROVED



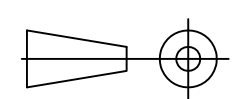
NOTES:  
 1. DO NOT SANDBLAST  
 2. MASK ALL THREADS BEFORE PLATING

FINO/REF.#	QTY.	UM.	PART NAME	MATERIAL	REF. SHEET/DWG.
1	EA		FRAME	ALUMINUM 6061 BLUE ANODIZED	

PARTS LIST			
FINO/REF.#	QTY.	UM.	PART NAME
UNLESS OTHERWISE SPECIFIED			
1. DIMENSIONS ARE IN INCHES.			
2. MACHINE SURFACES TO BE FLAT, SQUARE, PARALLEL, & CONCENTRIC BELOW 12			
3. WITHIN .001 FOR 3 INCHES OR .001 TIR AS APPLICABLE.			
4. BREAK ALL SHARP CORNERS AT X 45° CHAMFER.			
5. FILLETS SHOWN SHARP = .04 RAD.			
6. TAPPED HOLES UNFIED CLASS 2B THREAD, MIN DEPTH 1.5 x DIA.			
7. CSINK BORED & REAMED HOLES 1/16 x 45°.			
8. CENTERS PERMISSIBLE.			
9. ALL WELDING TO CONFORM TO LATEST AWS STANDARDS.			

PERMISSIBLE VARIATION IN INCH DIMENSIONS WITHOUT TOLERANCES	MACHINING TOLERANCES
12 TO 60	±.010
60 TO 180	±.013
OVER 180	±.020
	±.005
	±.010
	±.015
	±.020
	±.030
	±.045
	±.060
	±.075
	±.090
	±.105
	±.120
	±.135
	±.150
	±.165
	±.180
	±.195
	±.210
	±.225
	±.240
	±.255
	±.270
	±.285
	±.300
	±.315
	±.330
	±.345
	±.360
	±.375
	±.390
	±.405
	±.420
	±.435
	±.450
	±.465
	±.480
	±.495
	±.510
	±.525
	±.540
	±.555
	±.570
	±.585
	±.600
	±.615
	±.630
	±.645
	±.660
	±.675
	±.690
	±.705
	±.720
	±.735
	±.750
	±.765
	±.780
	±.795
	±.810
	±.825
	±.840
	±.855
	±.870
	±.885
	±.900
	±.915
	±.930
	±.945
	±.960
	±.975
	±.990
	±.1.005
	±.1.020
	±.1.035
	±.1.050
	±.1.065
	±.1.080
	±.1.095
	±.1.110
	±.1.125
	±.1.140
	±.1.155
	±.1.170
	±.1.185
	±.1.200
	±.1.215
	±.1.230
	±.1.245
	±.1.260
	±.1.275
	±.1.290
	±.1.305
	±.1.320
	±.1.335
	±.1.350
	±.1.365
	±.1.380
	±.1.395
	±.1.410
	±.1.425
	±.1.440
	±.1.455
	±.1.470
	±.1.485
	±.1.500
	±.1.515
	±.1.530
	±.1.545
	±.1.560
	±.1.575
	±.1.590
	±.1.605
	±.1.620
	±.1.635
	±.1.650
	±.1.665
	±.1.680
	±.1.695
	±.1.710
	±.1.725
	±.1.740
	±.1.755
	±.1.770
	±.1.785
	±.1.800
	±.1.815
	±.1.830
	±.1.845
	±.1.860
	±.1.875
	±.1.890
	±.1.905
	±.1.920
	±.1.935
	±.1.950
	±.1.965
	±.1.980
	±.1.995
	±.2.010
	±.2.025
	±.2.040
	±.2.055
	±.2.070
	±.2.085
	±.2.100
	±.2.115
	±.2.130
	±.2.145
	±.2.160
	±.2.175
	±.2.190
	±.2.205
	±.2.220
	±.2.235
	±.2.250
	±.2.265
	±.2.280
	±.2.295
	±.2.310
	±.2.325
	±.2.340
	±.2.355
	±.2.370
	±.2.385
	±.2.400
	±.2.415
	±.2.430
	±.2.445
	±.2.460
	±.2.475
	±.2.490
	±.2.505
	±.2.520
	±.2.535
	±.2.550
	±.2.565
	±.2.580
	±.2.595
	±.2.610
	±.2.625
	±.2.640
	±.2.655
	±.2.670
	±.2.685
	±.2.700
	±.2.715
	±.2.730
	±.2.745
	±.2.760
	±.2.775
	±.2.790
	±.2.805
	±.2.820
	±.2.835
	±.2.850
	±.2.865
	±.2.880
	±.2.895
	±.2.910
	±.2.925
	±.2.940
	±.2.955
	±.2.970
	±.2.985
	±.3.000

REV	DATE	BY	CHKD	DESCRIPTION
1	10/06/17	ANDREY		ISSUED FOR MANUFACTURE
2				
3				
4				
5				
6				
7				
8				
9				
10				
11				
12				
13				
14				
15				
16				
17				
18				
19				
20				
21				
22				
23				
24				
25				
26				
27				
28				
29				
30				
31				
32				
33				
34				
35				
36				
37				
38				
39				
40				
41				
42				
43				
44				
45				
46				
47				
48				
49				
50				
51				
52				
53				
54				
55				
56				
57				
58				
59				
60				
61				
62				
63				
64				
65				
66				
67				
68				
69				
70				
71				
72				
73				
74				
75				
76				
77				
78				
79				
80				
81				
82				
83				
84				
85				
86				
87				
88				
89				
90				
91				
92				
93				
94				
95				
96				
97				
98				
99				
100				



6 5 4 3 2 1

D C B A

A B C D

6 5 4 3 2 1