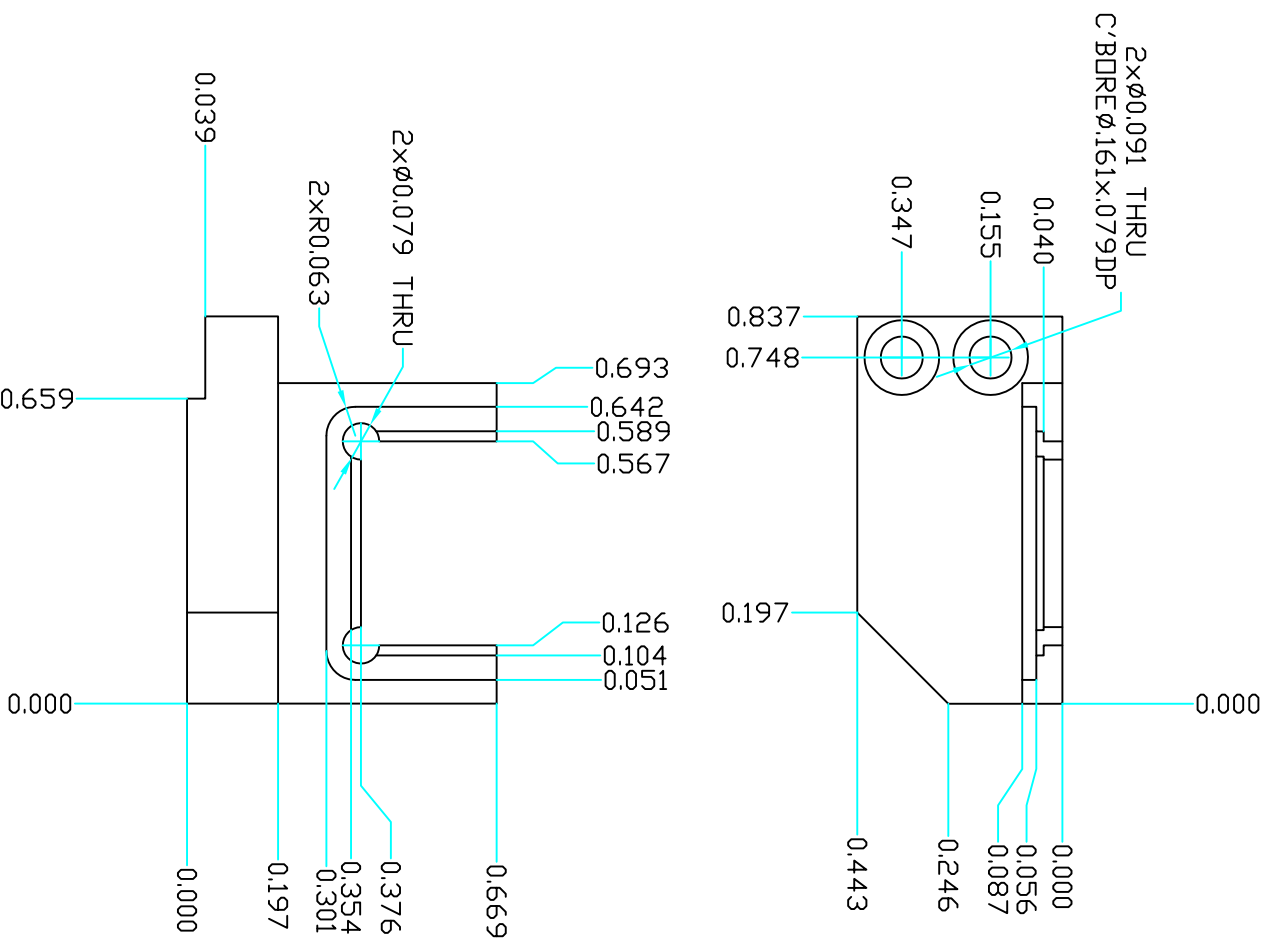
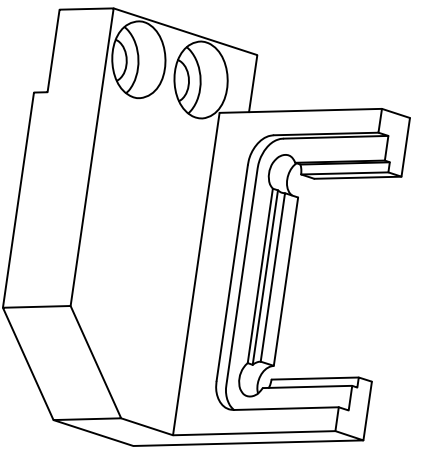


ZONE	REV	DESCRIPTION	DATE	APPROVED



FINO/REF.#	QTY.	UM.	PART NAME	MATERIAL	PART DESCRIPTION	REF. SHEET/DWG
1	EA		FRAME	ALUMINUM 6061	BLACK ANODIZED	

UNLESS OTHERWISE SPECIFIED

PARTS LIST		PERMISSIBLE VARIATION IN INCH DIMENSIONS WITHOUT TOLERANCES	
12 TO 60	±0.10	DECIMAL PLACES X & XX	XXX
60 TO 180	±0.13	BELOW 18	±0.015
18 TO 48	±0.20	±0.030	±0.020
OVER 180	±0.30	OVER 48	±0.045
		±0.090	±0.020
		±0.045	±0.015

1. DIMENSIONS ARE IN INCHES.  
 2. MACHINE SURFACES TO BE FLAT, SQUARE, PARALLEL, & CONCENTRIC BELOW 12  
 3. WITHIN .001 FOR .5 INCHES OR .001 TIR AS APPLICABLE.  
 4. BREAK ALL SHARP CORNERS .01 x 45° CHAMFER.  
 5. FILLETS SHOWN SHARP = .04 RAD.  
 6. TAPPED HOLES UNITED CLASS 2B THREAD, MIN DEPTH 1.5 x DIA.  
 7. CSK BORED & REAMED HOLES 1/16 x 45°.  
 8. CENTERS PERMISSIBLE.  
 9. ALL DIMENSIONS TO CENTER UNLESS NOTED OTHERWISE.  
 10. ALL WELDING TO CONFORM TO LATEST AWS STANDARDS.

PERMISSIBLE VARIATION IN INCH DIMENSIONS WITHOUT TOLERANCES

MACHINING TOLERANCES

SURFACE TEXTURE: Ra 32

TOLERANCES ARE NOT ACCUMULATIVE

REV	DATE	BY	CHKD	APP'D	REVISED
1	10/06/17	ANDREY	ANDREY		
2					

NSW ALIGNMENT  
D-BEAM BLACK  
COD FRAME

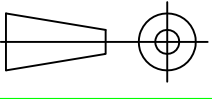
PROJECT NUMBER: 500

DRAWING NUMBER: 500.13.03.01

SHEET: 1 OF 1

REVISION: A

- NOTES:
- DO NOT SANDBLAST
  - MASK ALL THREADS BEFORE PLATING



ATLAS  
BRANDEIS

