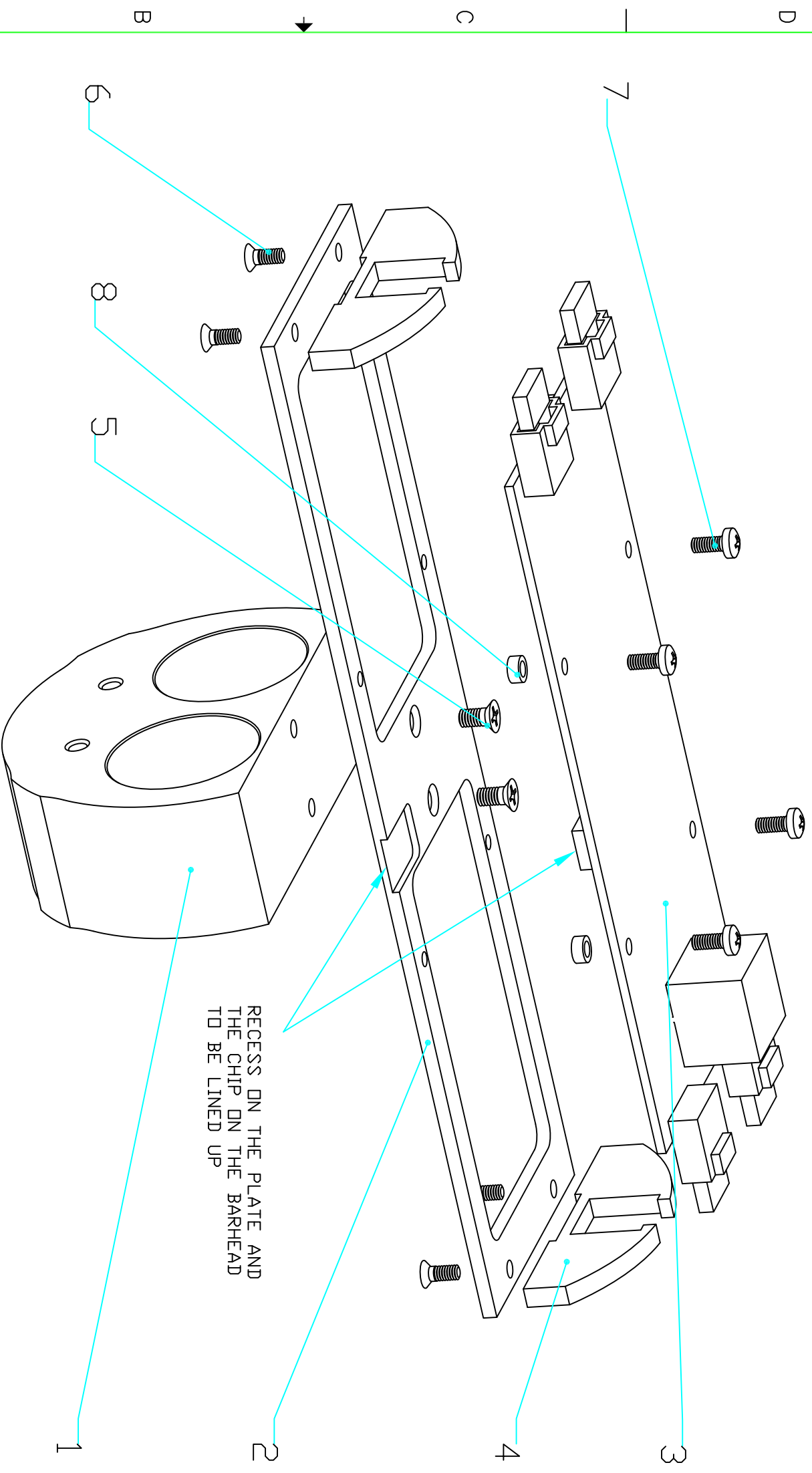


ZONE	REV	DESCRIPTION	DATE	APPROVED



RECESS ON THE PLATE AND THE CHIP ON THE BARHEAD TO BE LINED UP

QTY	PART NAME	MATERIAL	REF. SHEET/DWG.
8	SPACER	NYLON	
7	SCREW	316 ST/STEEL	
4	SCREW	316 ST/STEEL	
4	SCREW	316 ST/STEEL	
2	SCREW	316 ST/STEEL	
2	GUIDE	TEFLON	
1	EA	ORCUT	
1	EA	BARHEAD	
1	EA	BARHEAD SUPPORT	
1	EA	BARHEAD STATION	

PARTS LIST		PERMISSIBLE VARIATION IN INCH DIMENSIONS WITHOUT TOLERANCES	
FABRICATION TOLERANCES	MACHINING TOLERANCES		
BELOW 12	±0.10	BELOW 12	±0.10
12 TO 60	±0.13	BELOW 18	±0.015
60 TO 180	±0.20	18 TO 48	±0.020
OVER 180	±0.30	OVER 48	±0.045
		ANGLE TOLERANCE	±0.1°

UNLESS OTHERWISE SPECIFIED:
 1. DIMENSIONS ARE IN INCHES
 2. MACHINE SURFACES TO BE FLAT, SQUARE, PARALLEL & CONCENTRIC
 3. MATEMIALS (EXCEPT COMMERCIAL PARTS) WITH DWG.
 4. BREAK ALL SHARP CORNERS 0.1 x 45° CHAMFER.
 5. FILETS SHOWN SHARP = .04 RAD.
 6. TAPPED HOLES UNITED CLASS 2B THREAD, MIN DEPTH 1.5 x DIA.
 7. CSK/BORED & REAMED HOLES 1/16 x 45°.
 8. CHAMFER PERmissible.
 9. ALL DIMENSIONS TO BE TO LATEST A.M.S. STANDARDS
 10. ALL WELDING TO CONFORM TO LATEST A.M.S. STANDARDS

REV	DATE	BY	CHKD	APP'D	DESCRIPTION
1	2016.05.01	ANDREI	ANDREI		BARHEAD STATION ASSEMBLY

ATLAS BRANDEIS		SIZE: D SCALE: 1:1
PROJECT NUMBER: 201		DRAWING NUMBER: 201690500
TITLE: NSV IN-BAR ALIGNMENT EL-EIS BAR BARHEAD STATION ASSEMBLY		SHEET: 1 OF 1
DRAWING NUMBER: 201690500		REVISION: A

