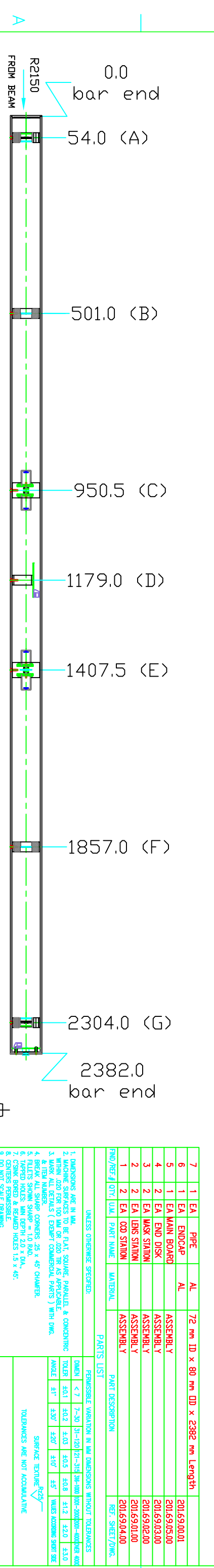
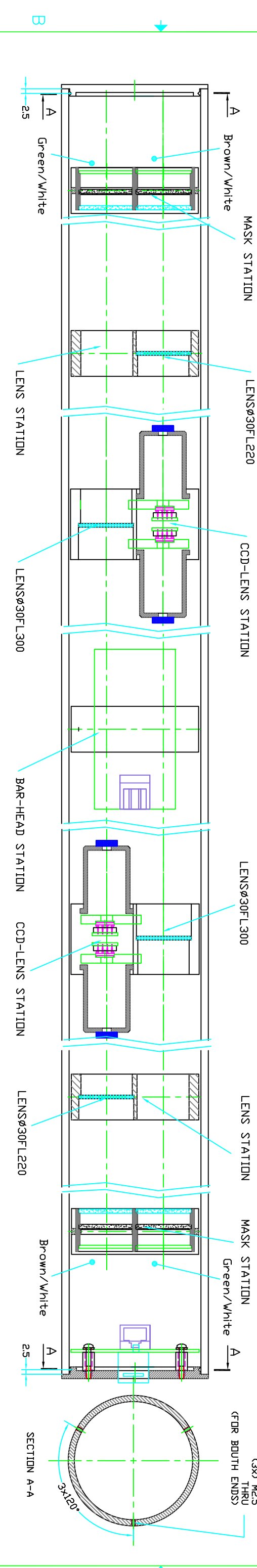
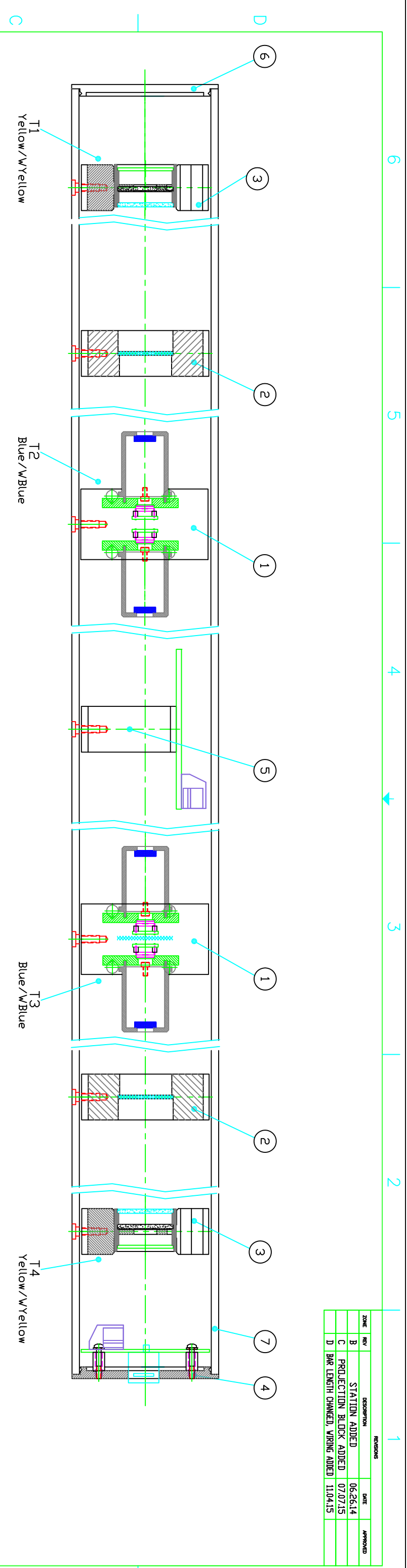
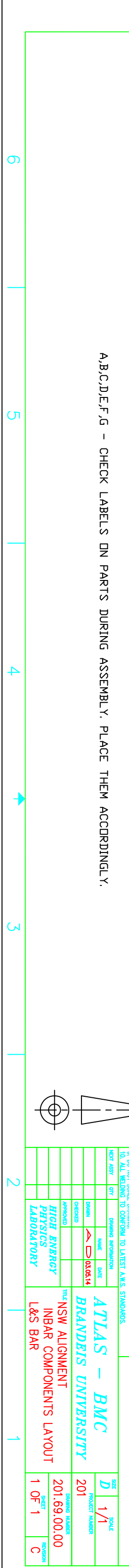


ZONE	REV	DESCRIPTION	DATE	APPROVED
B		STATION ADDED	06.26.14	
C		PROJECTION BLOCK ADDED	07.07.15	
D		BAR LENGTH CHANGED, WIRING ADDED	11.04.15	



A,B,C,D,E,F,G - CHECK LABELS ON PARTS DURING ASSEMBLY. PLACE THEM ACCORDINGLY.



PNQ/REF#	QTY	UOM	PART NAME	MATERIAL	REF. SHEET/DWG.
7	1	EA	PIPE	AL	201.69.00.01
6	1	EA	ENDCAP	AL	201.69.05.00
5	1	EA	MAIN BOARD	ASSEMBLY	201.69.03.00
4	2	EA	END DISK	ASSEMBLY	201.69.02.00
3	2	EA	MASK STATION	ASSEMBLY	201.69.01.00
2	2	EA	LENS STATION	ASSEMBLY	201.69.04.00
1	2	EA	CCD STATION	ASSEMBLY	201.69.04.00

DIMENSIONS ARE IN MM.	
1.	DIMENSIONS ARE IN MM.
2.	MACHINE SURFACES TO BE FLAT, SQUARE, PARALLEL, & CONCENTRIC WITHIN .020 FOR 100 MM OR .020 TH AS APPLICABLE.
3.	MARK ALL DETAILS (EXCEPT COMMERCIAL PARTS) WITH DIM.
4.	ITEM NUMBER.
5.	ALL CORNERS .25 x 45° CHAMFER.
6.	BULLET SHAPED SHARP TO 0.10 DIA.
7.	TAPPED HOLES MIN DEPTH 2.0 x DIA.
8.	CENTERS PERMISSIBLE.
9.	DO NOT SCALE DRAWING.
10.	ALL WELDING TO CONFORM TO LATEST AWS STANDARDS.

DATE	SCALE
03.05.14	D 1/1
201.69.00.00	PROJECT NUMBER
201.69.00.00	DRAWING NUMBER
1 OF 1	SHEET
C	REGION

ATLAS - BMC
BRANDEIS UNIVERSITY
NSW ALIGNMENT
INBAR COMPONENTS LAYOUT
L&S BAR