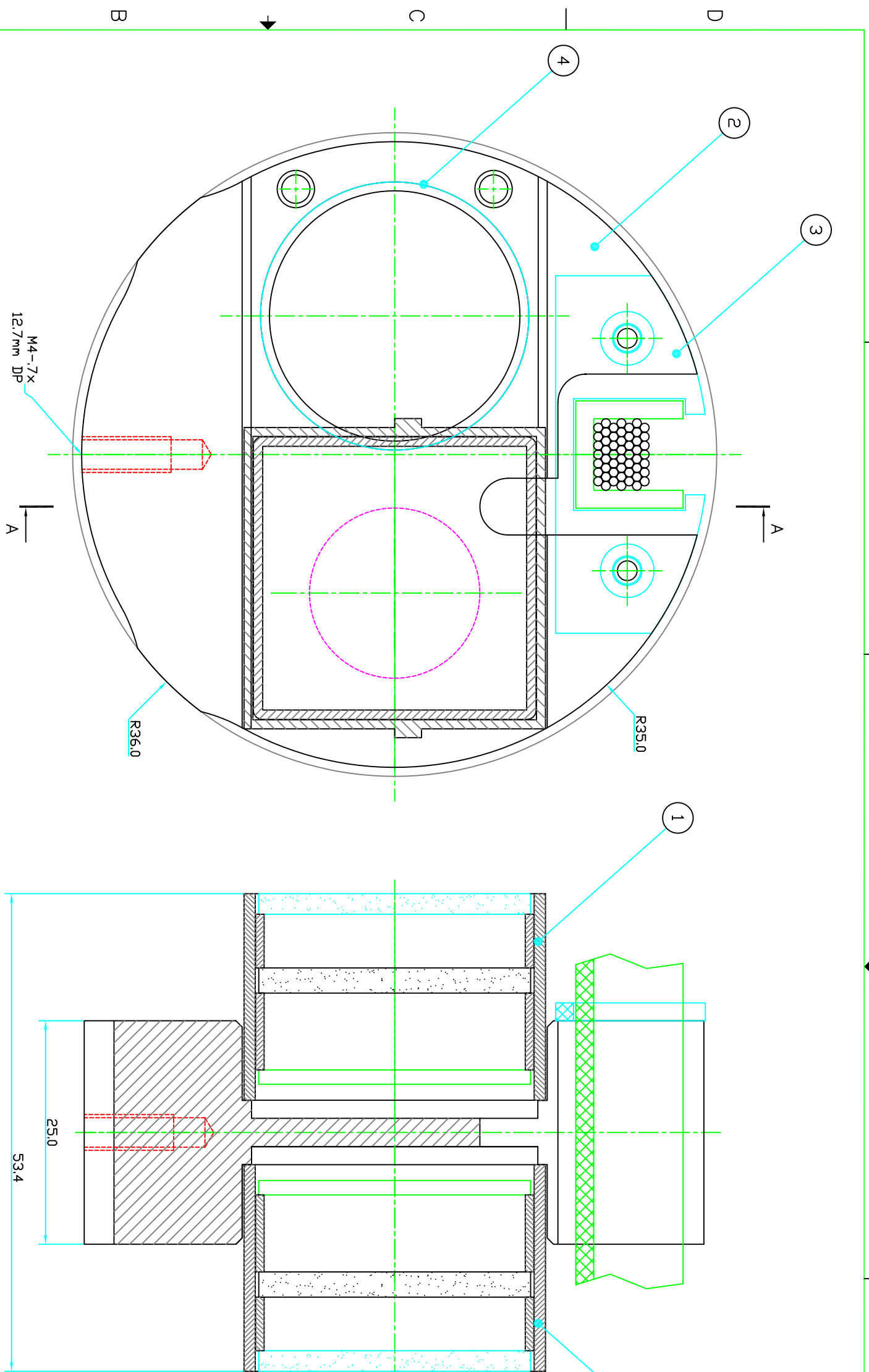


ZONE	REV	DESCRIPTION	DATE	APPROVED

1 2 3 4 5 6



DWG NUMBER	LENS FOCAL LENGTH (mm)	BAR
220.69.02.00	500	EEL-EES
-01	400	EES_SCI4

PNO/REF #	QTY	UOM	PART NAME	MATERIAL	PART DESCRIPTION	REF. SHEET/DWG.
4	1	EA	LENS1	TEFLON	Ø30 OD (SEE TABLE FOR THE FOCAL LENGTH)	220.53.01
3	1	EA	HOLDER	AL 6061	SUPPLIED	220.59.00
2	1	EA	mask disk72	ASSEMBLY		
1	1	EA	MASK			

UNLESS OTHERWISE SPECIFIED:

PARTS LIST	PERMISSIBLE VARIATION IN INCH DIMENSIONS WITHOUT TOLERANCES	MACHINING TOLERANCES
1. DIMENSIONS ARE IN INCHES.	BELOW 12	±0.10
2. MACHINE SURFACES TO BE FLAT, SQUARE, PARALLEL, & CONCENTRIC WITHIN .001 FOR 5 INCHES OR .001 THE AS APPLICABLE.	12 TO 60	±0.13
3. MARK ALL DETAILS (EXCEPT COMMERCIAL PARTS) WITH DIM.	60 TO 180	±0.20
4. HOLE NUMBER.	18 TO 48	±0.30
5. RILETS SHOWN SHARP UNLESS NOTED.	OVER 48	±0.45
6. TAPPED HOLES UNLESS CLASS 2B THREAD. MIN DEPTH 1.5 x DIA.		±0.05
7. CHAMF BORED & REAMED HOLES 1/16 x 45°.		±0.05
8. CENTERS PERMISSIBLE.		±0.10
9. DO NOT SCALE DRAWING.		±0.15
10. ALL WELDING TO CONFORM TO LATEST AWS STANDARDS		±0.15

NOTE:

-THE PARTS 1&2 HAVE TO BE GLUED TOGETHER.
-SIZES IN MM

DATE	06/26/08	SCALE	D
DRAWN	AB	PROJECT NUMBER	220
CHECKED	ES	DRAWING NUMBER	220.69.02.00
APPROVED		SHEET	1 OF 1
TITLE		REVISION	
ALIGNMENT INBAR (72 mm BAR ID)		A	
HIGH ENERGY PHYSICS LABORATORY			
ATLAS - BMC			
BRANDEIS			
EE MASK STATION			

6 5 4 3 2 1