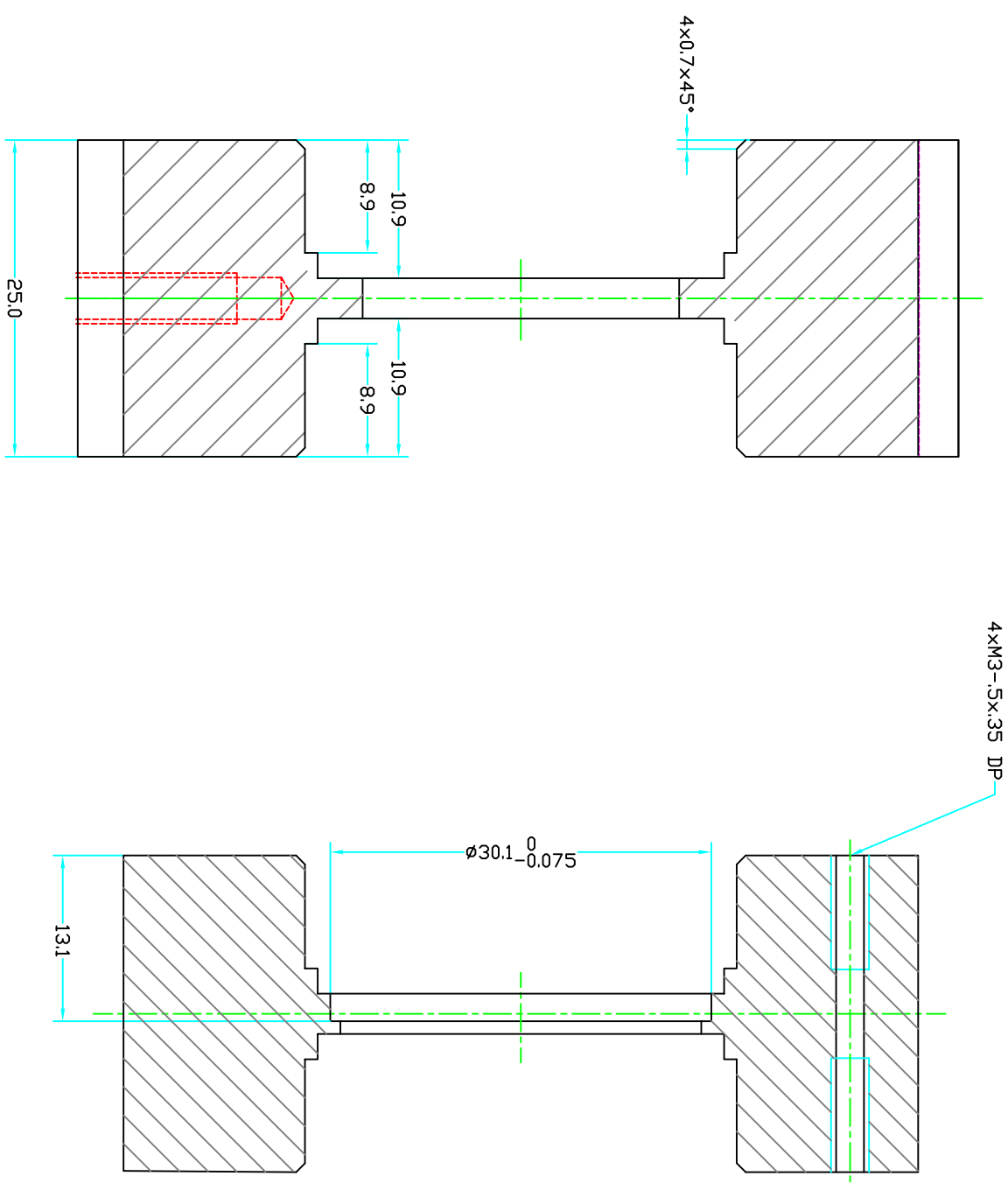
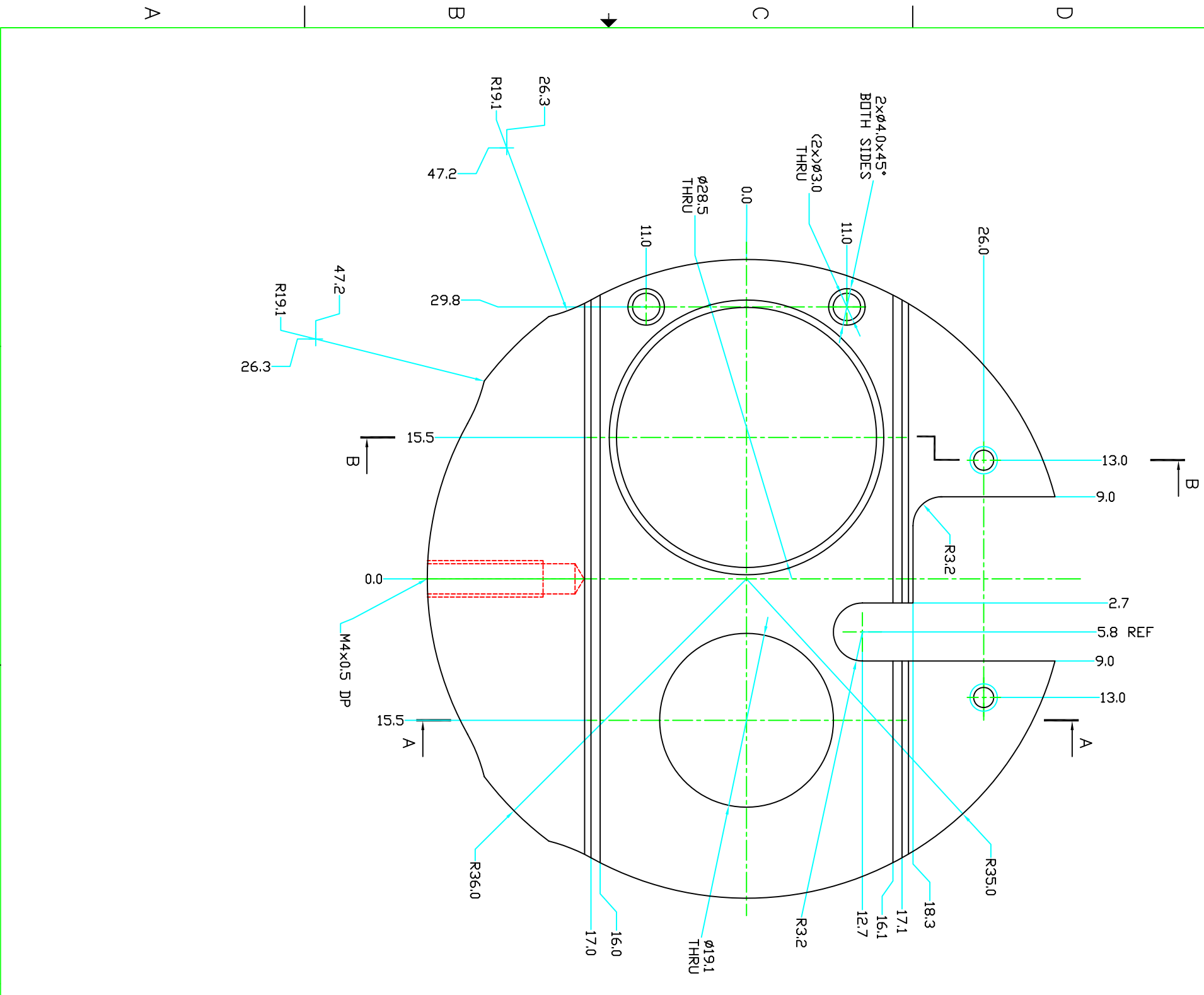


ZONE	REV	DESCRIPTION	DATE	APPROVED
B		CHAMFER ADDED, DESIGN CHANGED	12.19.02	JB
C		CHANGE SLIT	08/19/03	JB/N.S.
D		ADDED DWG #	09/29/03	JB/N.S.
E		TOLERANCES ADDED	06.25.08	JB



SECTION A-A

SECTION B-B



REV	QTY	EA	DISC	AL	6061	PART NAME	MATERIAL	REF. SHEET/DWG.

UNLESS OTHERWISE SPECIFIED:

PARTS LIST

DWGN	TOLER	PERMISSIBLE VARIATION IN MM DIMENSIONS WITHOUT TOLERANCES											
< 3	±0.05	3-6	±0.06	6-10	±0.075	10-18	±0.09	18-30	±0.105	30-50	±0.125	50-120	±0.175
3-6	±0.06	6-10	±0.075	10-18	±0.09	18-30	±0.105	30-50	±0.125	50-120	±0.175		
120-180	±0.20	180-250	±0.25	250-315	±0.315	315-400	±0.375	400-500	±0.43	500-630	±0.50	630-800	±0.63
800-1000	±0.30	1000-1250	±0.375	1250-1500	±0.45	1500-2000	±0.56	2000-3000	±0.7	3000-4000	±0.875	4000-5000	±1.125

1. DIMENSIONS ARE IN MM.
2. MACHINE SURFACES TO BE FLAT, SQUARE, PARALLEL, & CONCENTRIC WITHIN .020 FOR 100 MM OR .020 TH AS APPLICABLE.
3. MARK ALL DETAILS (EXCEPT COMMERCIAL PARTS) WITH DWG. & ITEM NUMBER.
4. HOLE NUMBER: 1. HOLE SIZE: 2. DEPTH: 3. TAPER: 4. CHAMFER: 5. HOLE NUMBER: 6. HOLE NUMBER: 7. HOLE NUMBER: 8. HOLE NUMBER: 9. HOLE NUMBER: 10. HOLE NUMBER.
5. HOLE NUMBER: 1. HOLE SIZE: 2. DEPTH: 3. TAPER: 4. CHAMFER: 5. HOLE NUMBER: 6. HOLE NUMBER: 7. HOLE NUMBER: 8. HOLE NUMBER: 9. HOLE NUMBER: 10. HOLE NUMBER.
6. TAPPED HOLES: MIN DEPTH 2.0 x DIA.
7. CHAMFERED & REAMED HOLES 1.5 x 45°.
8. CENTERS PERMISSIBLE.
9. DO NOT SCALE DRAWING.
10. ALL WELDING TO CONFORM TO LATEST AWS STANDARDS.

PERMISSIBLE VARIATION IN MM DIMENSIONS WITHOUT TOLERANCES

TOLERANCES ARE NOT ACCUMULATIVE

SURFACE TEXTURE: $R_{12.5}$

NAME	DATE	SCALE
ANDREI	06.26.08	D 5/1

ATLAS - BMC
BRANDEIS

HIGH ENERGY PHYSICS LABORATORY

ALIGNMENT INBAR (72 MM BAR ID)
MASK DISK 72

DRAWING NUMBER: 220.53.01
SHEET: 1 OF 1
REVISION: E

