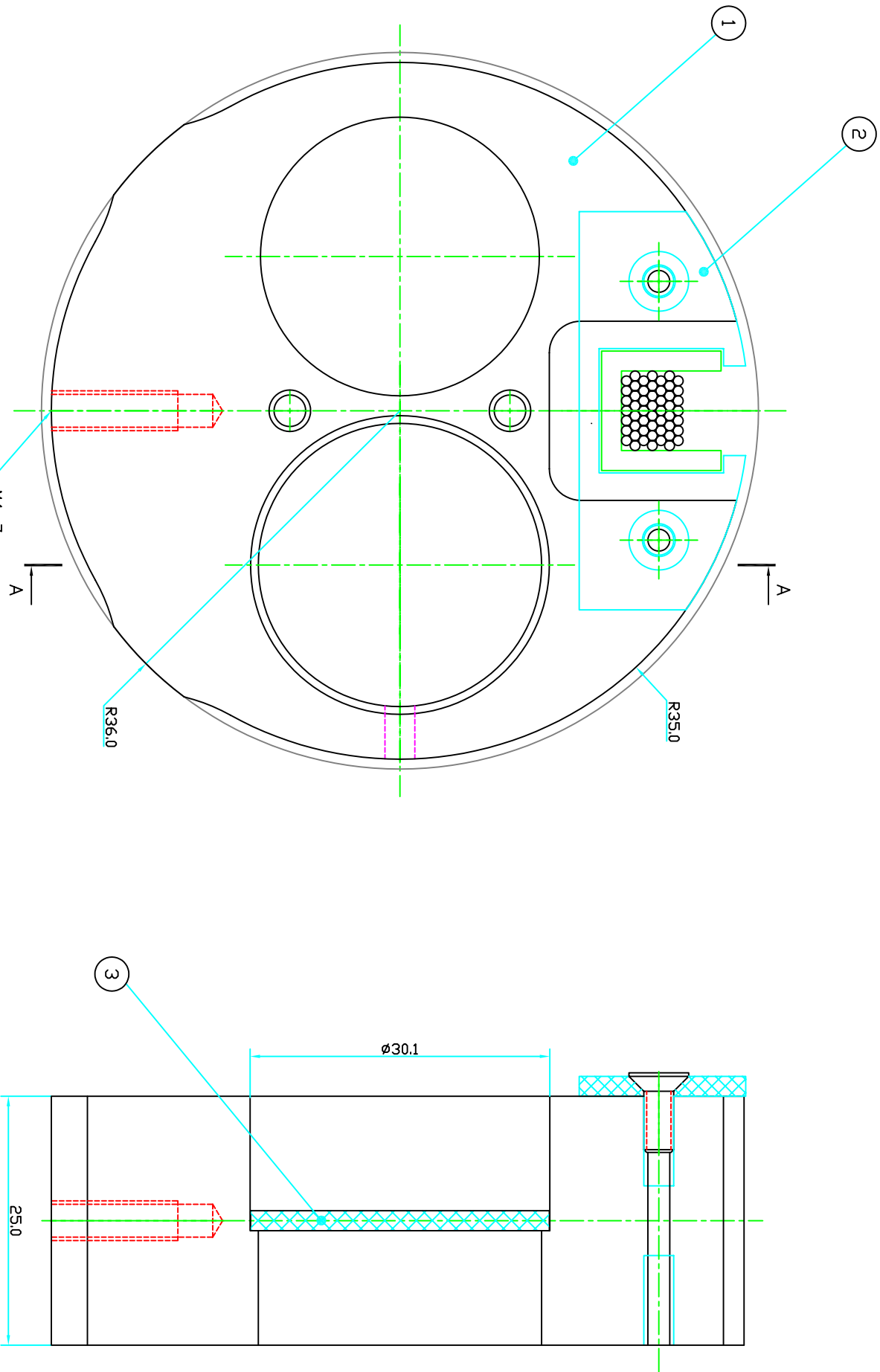


ZONE	REV	DESCRIPTION	DATE	APPROVED

DWG NUMBER	LENS FOCAL LENGTH (mm)	BAR
220.69.01.00	300	EEL-EES
-01	250	EES_SC14



SECTION A-A

NOTE:
SIZES IN MM

NO	QTY	UOM	PART NAME	MATERIAL	REF SHEET/DWG
3	1	EA	LENS	Ø30 DDC/SEE TABLE FOR FOCAL LENGTH	
2	1	EA	HOLDER	TEFLON SUPPLIED	
1	1	EA	lens disk	AL 6061	220.69.01.01

PARTS LIST		PERMISSIBLE VARIATION IN INCH DIMENSIONS WITHOUT TOLERANCES		MACHINING TOLERANCES	
12	±0.10	BEGINAL PLACES X & XX	X.XX	X.XXX	X.XXX
12 TO 60	±0.13	BELOW 18	±0.015	±0.010	±0.005
60 TO 180	±0.20	18 TO 48	±0.030	±0.020	±0.010
OVER 180	±0.30	OVER 48	±0.045	±0.030	±0.015
		ANGLE TOLERANCE 40.5°			

NEXT ASST		DRAWING INFORMATION		TITLE	
		NAME	DATE	ALIGNMENT	
		DRAWN	06/26/08	EE INBAR (72 mm BAR ID)	
		CHECKED		LENS STATION ASSEMBLY	
		APPROVED		HIGH ENERGY PHYSICS LABORATORY	
				ATLAS - BMC	
				BRANDEIS	
				DRAWING NUMBER 220.69.01.00	
				PROJECT NUMBER 220	
				SIZE D 4/1	
				SCALE	
				SHEET 1 OF 1	
				REVISION A	

TOLERANCES ARE NOT ACCUMULATIVE

SURFACE TEXTURE 125

UNLESS OTHERWISE SPECIFIED:

PERMISSIBLE VARIATION IN INCH DIMENSIONS WITHOUT TOLERANCES

MACHINING TOLERANCES

ANGLE TOLERANCE 40.5°

ALL DIMENSIONS ARE IN INCHES

MACHINE SURFACES TO BE FLAT, SQUARE, PARALLEL & CONCENTRIC

WITHIN .001 FOR 3 INCHES OR .001 THR AS APPLICABLE

WARRANTY ALL DIMENSIONS (EXCEPT COMMERCIAL PARTS) WITH DWG.

BREAK ALL SHARP CORNERS .01 x 45° CHAMFER.

FILES SHOWN SHARP = .04 RAD.

TAPPED HOLES UNITED CLASS 2B THREAD, MIN DEPTH 1.5 x DIA.

CSK/BORED & REAMED HOLES 1/16 x 45°.

CONTRIS PERMISSIBLE.

CONTRIS PERMISSIBLE.

ALL WELDING TO CONFORM TO LATEST A.M.S. STANDARDS

TOLERANCES ARE NOT ACCUMULATIVE